

POOR PERFORMING EQUIPMENT IS TYPICALLY THE RESULT OF ETHANOL AND OTHER CONTRIBUTING FACTORS FOUND IN PUMP GAS FROM THE STATION.

Whether you are running 2-cycle or 4-cycle outdoor power equipment, the key to optimal performance and protection is fuel specifically designed for small engines. TruFuel's ethanol-free, 92+ octane formula is the pioneer in engineered fuel, combating the issues associated with pump gas that lead to poor performance, costly repairs and downtime.

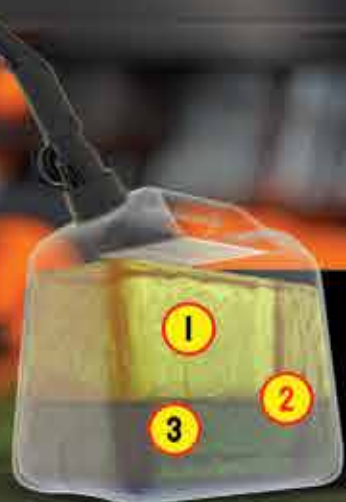
WHY IS "ETHANOL-FREE" SO IMPORTANT FOR SMALL ENGINE USE?



REGULAR FUEL LINE



FUEL LINE EXPOSED TO ETHANOL



1. Gasoline & 2-cycle oil
 2. Phase Separation
 3. Ethanol, water & no oil
- The first thing pumped into your engine.

PHASE SEPARATION

Phase separation is a common occurrence that results from the ethanol in pump gas drawing in moisture from the atmosphere. The water then bonds with the ethanol, separates and collects at the bottom of the tank. In addition to causing rust and corrosion, the raw ethanol and water are the first to enter your engine. This results in poor starts and high potential for internal damage, particularly in 2-cycle engines that no longer have the lubrication necessary to operate as the mix of fuel and oil has been disrupted and fuel treatment cannot bring it back to proper blend levels. Most do not realize that pump gas with ethanol destabilizes and becomes highly ineffective in as little as 30 days, so that red-can fill up at the gas station can be a recipe for disaster, particularly for limited use equipment.

THE ORIGINAL ENGINEERED FUEL



CONVENIENCE



PERFORMANCE



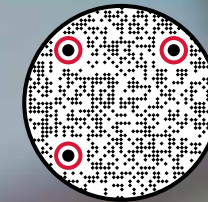
PROTECTION



TAKE THE HARD WORK OUT OF YARD WORK WITH TRUFUEL, THE ORIGINAL ENGINEERED FUEL FOR YOUR 2-CYCLE AND 4-CYCLE EQUIPMENT.



EMPOWER YOUR EQUIPMENT



SCAN THE QR CODE TO LEARN MORE.

GREAT FOR LONG TERM STORAGE

TruFuel has a shelf life of more than 5 years unopened and greater than 2 years after opening. It does not contain the components that break down fuel like station gas. TruFuel 40:1 and 50:1 mixes contain the exact blends of fuel & high quality synthetic oil recommended by equipment manufacturers, while TruFuel 4-cycle fuel contains our unique TF3 additive package that helps mowers, generators, power washers and snow throwers perform at their best, even despite limited use. TruFuel's ethanol-free, gum & varnish-free, benzene-free formula with balanced aromatics and proprietary stabilizer result in easy engine starts, smoother idling and stronger throttle response year after year.

TRUFUEL®

THE ORIGINAL ENGINEERED FUEL

CONVENIENCE PERFORMANCE PROTECTION

ETHANOL-FREE | HIGH OCTANE | PREMIUM SYNTHETIC OIL

ATTRIBUTES



Ready to Use Premixed Oil and Fuel	YES	FUEL ONLY	NO
92+ Octane Engineered Fuel	YES	YES	NO
Ethanol-Free	YES	YES	NO
Gum and Varnish Free	YES	YES	NO
Butane Free	YES	YES	NO
Benzene Free	YES	YES	NO
2+ Year Shelf Life	YES	YES	NO
Consistent Formula Throughout the Year	YES	YES	NO
Aromatics Balanced	YES	YES	NO
Synthetic Oil	YES	NO	NO
Fuel Stabilizer	YES	YES	NO
Easy Pour Container	YES	YES	NO

Engineered to help your equipment run the way it was designed, TruFuel provides the convenience of easy storage and readiness to use when you need it. Please visit trufuel50.com or search "TruFuel" on the web to learn more about the leader in Engineered Fuel technology.

TRUFUEL50.COM

f /TRUFUEL50 @TRUFUEL_50 @TRUFUEL50 @TRUFUEL

sales@calumetpackaging.com, marketing@calumetpackaging.com, operations@calumetpackaging.com.

PRODUCT SETUP

		MFG Order#	Can UPC	Case UPC	Case GTIN	Pack
32 oz.	TRUFUEL 40:1	301164210040	875750000736	875750000743	10875750000733	6
	TRUFUEL 50:1	301027210040	875750000095	875750000156	10875750000092	6
	TRUFUEL 4-Cycle	301597210040	875750001849	875750002044	00875750002044	6
110 oz.	TRUFUEL 40:1	301164210180	875750003210	10875750002317	N/A	4
	TRUFUEL 50:1	301027210180	875750002303	10875750002300	N/A	4
	TRUFUEL 4-Cycle	301597210180	875750002327	10875750002324	N/A	4
2.1 Gal	TRUFUEL 50:1	301027210202	875750003539	875750003614	20875750003533	2
	TRUFUEL 4-Cycle	301597210202	875750003546	875750003607	20875750003540	2
4.75 Gal	TRUFUEL 40:1	301164210016	875750002341	N/A	N/A	1
	TRUFUEL 50:1	301027210016	875750002334	N/A	N/A	1
	TRUFUEL 4-Cycle	301597210016	875750002358	N/A	N/A	1
Drums	TRUFUEL 40:1	301164210001	875750003188	N/A	N/A	1
	TRUFUEL 50:1	301027210001	875750003171	N/A	N/A	1
	TRUFUEL 4-Cycle	301597210001	875750003195	N/A	N/A	1

PACKAGING SPECS

	32 oz.	110 oz.	2.1 Gal	4.75 Gal	Drum
Case Length	10 1/2"	13 5/8"	17.812 in	N/A	N/A
Case Height	10"	10 5/8"	11.500 in	N/A	N/A
Case Width	7 1/4"	8 11/16"	9.062 in	N/A	N/A
Case Weight	192.7 oz. (12.04 lbs.)	416.9 oz. (26.05 lbs.)	30.92 lb	N/A	N/A
Each Length	3 3/8"	6 1/2"	8.688 in	13" (diameter)	23" (diameter)
Each Height	9 3/4"	10 1/4"	10.781 in	15"	35"
Each Width	3 3/8"	3 3/16"	8.688 in	13"	23"
Each Weight	30.9 oz.	104 oz.	15.07 lb	29.95 lbs.	329 lbs.
TI	22 cs.	13 cs.	10 cs.	14 pails	4 drums
HI	6	5	5	3	1
Cases Per Pallet	132 cs.	65 cs.	50 cs.	42 pails	4 drums
Truckload Cs./Eaches	3,168 cs. (19,008 ea.)	1,300 cs. (5,200 ea.)	1,200 cs. (2,400 ea.)		
Restrict Transport	No	Yes	Yes	Yes	Yes
Contains Toluene	Yes	Yes	Yes	Yes	Yes
Hazardous Product	Yes	Yes	Yes	Yes	Yes
Hazardous Code	UN 1203	UN 1203	UN 1203	UN 1203	UN 1203
Description	Gasoline	Gasoline	Gasoline	Gasoline	Gasoline
Class	3	3	3	3	3
Packing Group	II	II	II	II	II
Domestic Ground Transport	LQ	HazMat	HazMat	HazMat	HazMat
Hazmat by Ocean	Yes	Yes	Yes	Yes	Yes
Hazmat by Air	Yes	Yes	Yes	Yes	Yes

EMPOWER YOUR EQUIPMENT



50:1 ^{MAX} ENGINEERED FUEL + OIL

READY TO USE FOR 2-CYCLE ENGINES

ETHANOL-FREE EXCELLENT FOR LONG TERM STORAGE



DANGER: EXTREMELY FLAMMABLE LIQUID & VAPOR. VAPOR MAY CAUSE FLASH FIRE. VAPOR HARMFUL. HARMFUL OR FATAL IF SWALLOWED. IRRITATING TO RESPIRATORY TRACT, EYES & SKIN. CAREFULLY READ ALL WARNINGS ON BACK PANEL.

110 FL. OZ. (3.253 Liters)

TRUFUEL®

Please see 2.1 gallon package details inside, our newest addition for heavy users!